



SOCIAL IMPACT ASSESSMENT REPORT ON LAND ACQUISITION AT 19TH MILE, BYRNIHAT, RI BHOI DISTRICT

MEGHALAYA INSTITUTE OF GOVERNANCE
SHILLONG

ABOUT MEGHALAYA INSTITUTE OF GOVERNANCE

The Meghalaya Institute of Governance was created as one of the institutional support mechanism of the Meghalaya Basin Development Authority with a vision to explore, share and promote good governance in Meghalaya by assisting the government, private sector, the voluntary sector, and the communities in putting good governance into practice.

In exercise of powers conferred by the Sub Section (1) of Section 4 of the Right to Fair Compensation and Transparency in Land Acquisition, , Rehabilitation and Resettlement Act, 2013 (No. 30 of 2013), the Government of Meghalaya had notified the Meghalaya Institute of Governance as the State Social Impact Assessment Unit for carrying out Social Impact Assessment Study.

Publication Year - June, 2017



Meghalaya Institute of Governance
Lumpyngad Cottage, Bishop Cotton Road, Shillong- 793001
Phone No.: 0364-2505977, Email: migshillong@gmail.com

Declaration

This final SIA and SIMP report is purely based on the information given by stakeholders and local people of the villages of 19th Mile, Pahammawlein village, Ri Bhoi District, Meghalaya. Maps and project details were provided by the Office of the Deputy Commissioner, Ri Bhoi District (Revenue), Nongpoh.

This Social Impact Assessment and Social Impact Management Plan is the final SIA report after the Public Hearing.

Officer on Special Duty,
Meghalaya Institute of Governance,
Shillong.

Contents

List of Tables	vi
List of Figures	vi
Abbreviations	vi
Executive Summary	1
Introduction	3
Objective of the project:	4
Need of the project:	4
Project location:	4
Maps and Illustration:	6
Research Methodology	8
Methods for Data collection	8
Primary Data	8
Secondary Data	9
Public Hearing	9
Data Processing and Analysis	9
Stakeholder Consultation	10
Description of the Project Area	10
Demographic profile of the village:	10
Assessment of Land	11
Consultation with Stakeholders:	12
Focus Group Discussion with community members of 19th mile.	14
Data Collected From the Public Hearing Held on 10 th June, 2017 at 19 th Mile, Ri Bhoi District, Meghalaya	18
Major Findings	21
Environmental impacts	21
Trees & Vegetation	21
Water Sources	21
Impact on Women	21
Impact on Transport and Communication	22
Impacts on Safety	22
Impacts on Sanitation & Cleanliness	22
Findings from the Public Hearing	22

Other Issues	22
Social Impact Mitigation Plan	24
Measures to Avoid, Mitigate and Compensate Impact	26
Resettlement Measures	26
Rehabilitation Measures	26
Bibliography	27
Annexure 1. Notification to conduct SIA on proposed land acquisition at 19 th Mile Byrnihat.	28
Annexure 2. Notification for Public Hearing to be Held at 19 th Mile on 10 th June, 2017	29
Annexure 3. Attendance Sheet from the Reconnaissance Survey	30
Annexure 4. Attendance Sheet from the Focus Group Discussion held on 5 th June, 2017	31
Annexure 5. Attendance Sheet from Public Hearing held on 10 th June, 2017	32

List of Tables

Table 1 Dates of Stakeholder Consultation	10
Table 2 Summary of Consultation with Stakeholders.....	15
Table 3 Summary Table of Positive and Negative Impacts.....	24

List of Figures

Figure 1 Project Site	4
Figure 2 Map of Land Proposed to be acquired at 19th Mile, Ri Bhoi.....	6
Figure 3 Consultation with Land Owner and former Land Owners on 29th May, 2017.....	11
Figure 4 KII with member of the Village Durbar	12
Figure 5 FGD with village residents on the 5th June, 2017.....	13
Figure 6 KII with Adjacent Land Owner Shri. B. Mawa on 5th June, 2017	14
Figure 7 Public Hearing at 19th Mile, Ri Bhoi District on 10th June, 2017	18
Figure 8 Public Hearing at 19th Mile, Ri Bhoi District on 10th June, 2017	19
Figure 9 Public Hearing at 19th Mile, Ri Bhoi District on 10th June, 2017	20

Abbreviations

FGD	-	Focus Group Discussion
KII	-	Key Informant Interview
MIG	-	Meghalaya Institute of Governance
SIA	-	Social Impact Assessment
SIMP	-	Social Impact Mitigation Plan
KHADC	-	Khasi Hills Autonomous District Council
C&RD	-	Community & Rural Development

Executive Summary

The Meghalaya Institute of Governance (MIG), the Social Impact Assessment Unit of the state was assigned the task of conducting a SIA study on the proposed land acquisition for the construction of an Integrated Facilitation Centre – Entry Point at 19th Mile, Byrnihat, Ri Bhoi District, Meghalaya. The proposed land to be acquired measures about 15 acres approximately. It was identified by the District Administration, Ri Bhoi District for the project and the land belongs to an individual Shri. M. L. Shira.

On receipt of the notification under Section 4(2) of the Right to Fair Compensation and Transparency in Land Acquisition, Rehabilitation and Resettlement Act, 2013 from the Revenue Department, Government of Meghalaya, the MIG started the SIA study, adopting research methodology such as reconnaissance survey, KII and FGD for collection of primary data. The secondary data was supported by the maps and project description received from the Office of the Deputy Commissioner (Revenue), Ri Bhoi District, Meghalaya.

The land to be acquired is a steep hillock. From the site survey and the interactions with the various stakeholders it was learnt that the land was previously used to cultivate broom grass. However, as the land had been purchased, the new land owner has stopped cultivation though the broom grass still grows and is being harvested freely by the villagers.

The residents of the village were hopeful that the project will bring about employment opportunities and will increase the safety in the village due to the presence of more police force.

A Public Hearing was conducted on the 10th June 2017 at 19 Mile, GS Road, Ri Bhoi District. During the Public Hearing residents of the village, the land owner, officials from the Office of the Deputy Commissioner, Ri Bhoi District and from the Soil and Water Conservation Department were present. Also present were representatives from different NGOs. At the Public Hearing, the proposal for establishing an Integrated Facilitation Centre (Entry Point) at 19th Mile, GS Road Ri Bhoi District was accepted by the residents of the village.

The SIMP presented here discusses certain safeguards for the project such as proper construction guidelines as well as safeguards to protect against landslides. There is no need to resettle any individuals or households nor is there any need to compensate for structures as there are none present in the land. There is however, a need to compensate for trees and vegetation that will be lost once the construction of the project occurs.

Introduction

As per The Right to Fair Compensation and Transparency in Land Acquisition, Rehabilitation and Resettlement Act, 2013 the Meghalaya Institute of Governance (MIG) was assigned the task of conducting a Social Impact Assessment Survey on the land acquisition for the purpose of setting up an Entry Point at 19th Mile, Pahammawlein, GS Road, Ri Bhoi District Meghalaya¹. The objective of the study is to identify likely impacts which may result from the proposed project.

The concept of an Integrated Facilitation Centre – Entry and Exit Point came up as a concession to the demands of local pressure groups to set up the Inner Line Permit² and thus check on the entry of unwanted elements into the state. The Integrated Facilitation Centre – Entry and Exit Point was proposed to be set up in all entry point areas of the state to address the issues of illegal immigration³ into the state. The Integrated Facilitation Centre – Entry Point proposed to be set up in Ri Bhoi District has been sited at 19th Mile, Pahammawlein.

The objective of this study is to assess the likely impacts on the village and its residents from the setting up such a project in the site. The research team looked at both the positive as well as the negative impacts the Entry Point would bring.

¹ See Annexure 1

Objective of the project:

The main objective for the proposed Integrated Facilitation Centre at the Entry point is to facilitate and check the entry of illegal immigrants from outside the state.

Figure 1 Project Site



Need of the project:

The project is envisioned to act as an information centre for tourism, registration of migrant labourers and put a check on illegal entry to address the issue of influx into the state.

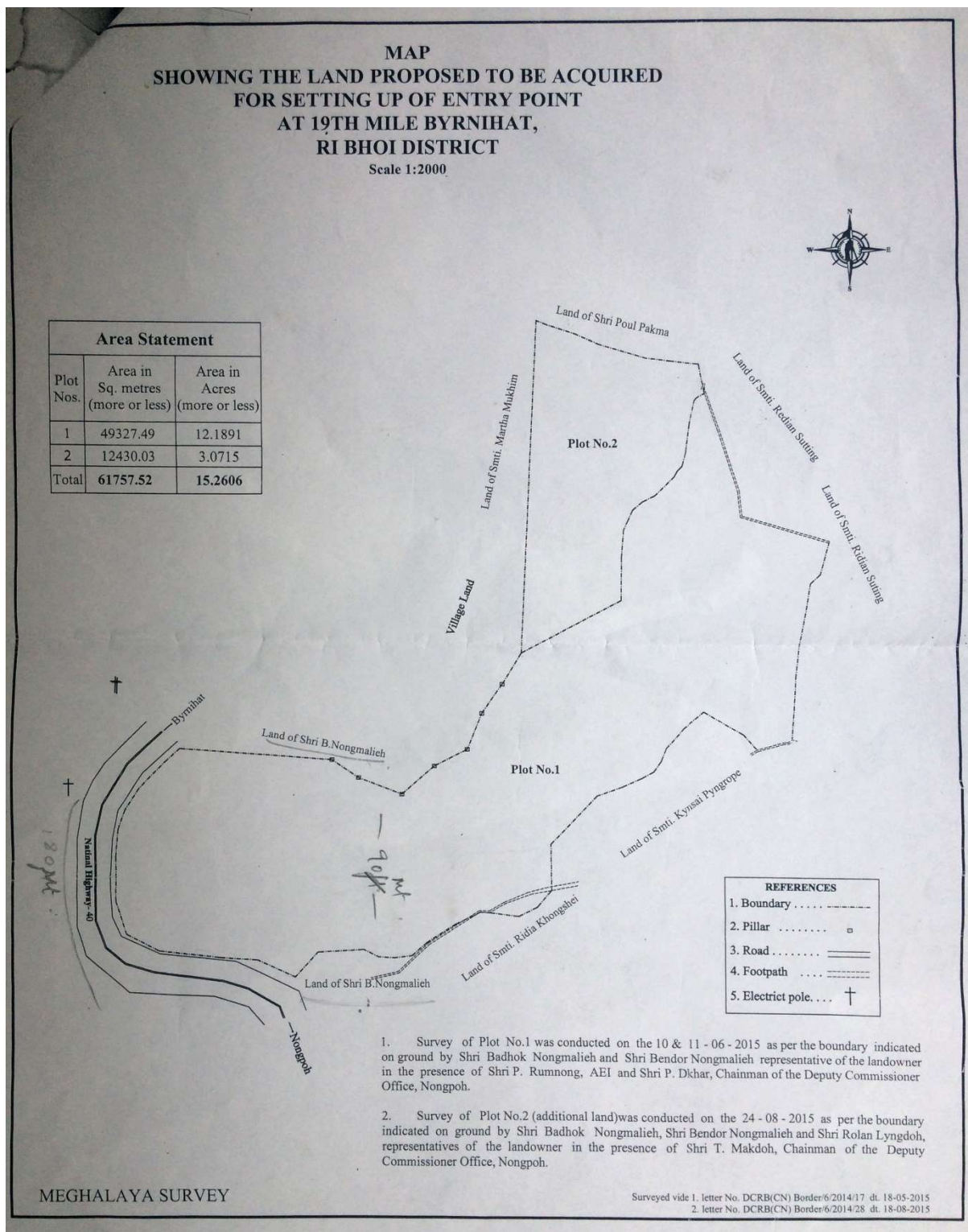
Project location:

The proposed project area is located in 19th Mile, within 1 km from the Existing NHAI toll plaza at Umling. The distance of the site from Nongpoh,

the District Headquarter of Ri Bhoi District, is 14.5 km. It is approximately 15 kms from the state border with Assam. The total area of the proposed project is 15.2606 Acres wherein Plot number 1 measures 12.1891 Acres and plot number 2 measures 3.0715 Acres. The Entry point has been located on a steep hillock ranging from 275-445 meters above sea level having GPS coordinates of 25°59'56"N, and 91°51'46" E.

Maps and Illustration:

Figure 2 Map of Land Proposed to be acquired at 19th Mile, Ri Bhoi



According to the map received from the Revenue and Disaster Management Department, Government of Meghalaya the project site is bounded by the land of:

- i. Shri. Paul Pakma
- ii. Smti. Redian Suting
- iii. Smti. Kynsai Pyngrope
- iv. Smti. Redia Khongshei
- v. Shri. B. Nongmalieh
- vi. Smti. Martha Mukhim
- vii. Village land
- viii. NH-40

Research Methodology

This Chapter includes the methods and approaches adopted by the Social Impact Assessment Unit to gather information from the field. The research methodology used is a descriptive one. This method describes the specific behaviour and facts concerning the nature of the problem. It involves gathering data that describes the events, followed by organisation, tabulation, depiction and description of the data collection.

Methods for Data collection

Primary Data

Primary data was collected through interviews using semi-structured, open ended questionnaires, with land owners and directly affected stakeholders, focus group discussions as well as observations as seen on the field.

Reconnaissance Survey

The reconnaissance field survey was carried out to understand the project area and come out with specific Terms of Reference for the project before formulating the questionnaire and interview schedule for primary data collection. The research team surveyed the project area, met with the village functionaries to learn about the usage, ownership and access of the project site as well as to learn about the distribution of natural resources near about the project site.

Key Informant Interview and Focus Group Discussion

The research team took samples from directly affected and indirectly affected respondents and the functionaries from the Village Executive Committee using Key Informant Interviews. The data was collected using open ended questionnaires including a socio-economic profile of the respondents. Two separate questionnaires were used for the land owners, adjacent land owners and Village Executive Committee. The methods used were structured and designed based on the likely impacts on the project area.

Secondary Data

The research team reviewed and researched on related literature to understand the requirements of the project. Based on this literature review, the team was able to get an insight on the background of the project and this allowed for group identification and formulation of questionnaires. The secondary data of relevant documents such as project description, maps, details of land owners, etc. was obtained from the office of the District Commissioner (Revenue Branch), Ri Bhoi District, Nongpoh.

Public Hearing

As part of the requirement of the Right to Fair Compensation and Transparency in Land Acquisition, Rehabilitation and Resettlement Act, 2013 under Section 5 of a Public Hearing was held on the 10th June 2017 at 11:00 am at the project site itself.

Data Processing and Analysis

The data collected has been systematically arranged, organised and tabulated by the Social Impact Assessment Team.

Stakeholder Consultation

Description of the Project Area

The project site allocated for setting up of Entry Point in Ri Bhoi District is located in 19th Mile, Pahammawlein which falls under Umling C&RD Block. The distance from the project site to Umling toll plaza is about 1 Km and 14.5 km from the District Headquarter in Nongpoh.

Table 1 Dates of Stakeholder Consultation

Sl. No.	Type of Consultation	Date of Consultation
1.	Reconnaissance Visit	29 th May, 2017
2.	KII with Village Authority	29 th May, 2017
3.	KII with Land Owners	29 th May, 2017
4.	FGD with former land owners	29 th May 2017
5.	FGD with village residents	5 th June, 2017
6.	KII with Adjacent Land Owners	5 th June, 2017
7.	Public Hearing and Public Consultation	10 th June, 2017

Demographic profile of the village:

Brief about 19th Mile Village:

19th Mile is a locality of Pahammawlein Village in Ri Bhoi District. 19th Mile has about 20 Households in it and a total population of 50 people, in which 30 are female and 20 are male approximately. The overall literacy rate of the locality is 20%. All the residents of 19th mile are Scheduled Tribes

(Khasi). The main occupation of the people is agriculture and daily wage labour.

Figure 3 Consultation with Land Owner and former Land Owners on 29th May, 2017



Assessment of Land

Type of land: The land to be acquired is a steep hillock ranging from 275-445 meters above sea level.

Use of Land: According to the Assistant Headman of Pahammawlein in charge of 19th Mile, Shri. B. Rane two households used to cultivate broom grass on the land before it was sold to Shri. M.L.Shira about 3 years back. After that, it was left barren and cultivation on the project site ended.

Structures on Land: There are no structures (temporary or permanent) on the project site. *Vegetation on Land:* The land to be acquired has broom grass and shrubs.

Water sources and other natural resources: The project site has no water sources on it.

Figure 4 KII with member of the Village Durbar



Consultation with Stakeholders:

This section discusses, interprets and analyse the data collected from the respondents based on Key Informant Interview with the land owner and adjacent land owner.

Socio Economic profile of the land owner:

Shri M L Shira, owner of the land is a resident of Shillong and bought the land 3 years back from Smti. Felicia Mary Kharhunai. The acquisition of this land would bring him financial gain as well as development to that village.

Figure 5 FGD with village residents on the 5th June, 2017



According to the discussion with the land owner, Shri. M.L. Shira, the land has remained unused since he bought in 2014 and the acquisition will not affect his economic security, rather it will improve it.

Socio Economic profile of the adjacent land owner:

A KII was conducted with Shri Bim Mawa, who is one of the adjacent land owners from 20th Mile, Pahammawlein. The size of his family includes 4 members, two (2) adult members and two (2) minor children aged 6 and 4 years. He is an agriculturalist and supplements his income through daily

wage labour. Apart from cultivating broom grass on his own land he freely⁴ collects broom grass from the project site. From all of his economic activities he earns around Rupees 45,000 to 50,000 annually. According to him, it will be a loss as he gets an extra income of about Rs 5000 annually by collecting broom grass from the proposed project site.

Figure 6 KII with Adjacent Land Owner Shri. B. Mawa on 5th June, 2017



Focus Group Discussion with community members of 19th mile.

This section will discuss the focus group discussion that was held on the 5th June 2017 with the community members from 19th Mile. There were 10 participants in the FGD, nine (9) males and 1 (female). From the FGD the following were learnt:

⁴ The households who collect broom grass from the proposed project site do not pay rent for the use of this land.

Table 2 Summary of Consultation with Stakeholders

Sl. No.		Remarks by FGD Participants
1.	<i>Awareness level on the proposed project</i>	Participants who attended the FGDs said that they were aware about the setting up of the Integrated Facilitation Centre cum Entry Point in the village from the members of the village authority.
2.	<i>Type of land utility for proposed construction site</i>	The proposed land to be acquired was utilised by the local people for cultivation of broomstick but after Shri. M L Shira bought the land three years back active cultivation on it ended. it has been left unused.
3.	<i>Anticipated Impacts from the project</i>	According to the community members, the project will have no negative impact, rather it will bring development to the village and will create employment opportunities to the locals Residents.
4.	<i>Impact on the Village</i>	As the homestead area of the village is on another hillock distant from the project site the residents will not face any negative impact from the construction.
5.	<i>Impact on Roads and access</i>	The participants said the NH-40 will be affected only during construction period. They also mention that there is a road

		through the project site which connects NH-40 with the village homestead, however, this road is hardly used and the disturbance to it will have negligible effect on them as they prefer to use another road which is not as steep.
6.	<i>Impact on the Environment</i>	They mention that there will be no negative environmental impact as it is a barren land with no cultivation taking place.
7.	<i>Impact on Water Sources</i>	They mention that there will be no negative impacts on the water sources as the water tank present nearby will not be affected during the construction.
4.	<i>Community Safety</i>	The participants said that after the coming of this project it will bring more security as there will be more streetlights as well as more policemen in and around the area which will decrease illegal activities in the village.
5.	<i>Impact on Economic Activity and Income</i>	The participants stated that it will not have adverse effect on the economic activities. Instead both men and women will get benefit as they will get to open more shops/stalls in and around the project area.
6.	<i>Impacts during the Construction</i>	The people mentioned that there will be no impact from the coming of this project and

	<i>Period</i>	the only concern they have is that during excavation, soil should be properly dumped.
7.	<i>Expectation from the Project</i>	The participants said that their expectations from the project on first priority is job opportunity to the locals.

Data Collected From the Public Hearing Held on 10th June, 2017 at 19th Mile, Ri Bhoi District, Meghalaya

The Meghalaya Institute of Governance conducted a Public Hearing on the 10th June 2017 at 19th Mile, Pahammawlein, Ri Bhoi District for the construction of Integrated Facilitation Centre cum Entry Point which is a part of the Social Impact Assessment Study under the Right to Fair Compensation and Transparency in Land Acquisition, Rehabilitation and Resettlement Act, 2013.

Figure 7 Public Hearing at 19th Mile, Ri Bhoi District on 10th June, 2017



The Hearing was chaired by Shri Aiban Swer O.S.D Meghalaya Institute of Governance in the presence of Smt Y.R Mawlong EAC, MCS from the office of the Deputy Commissioner, Ri-Bhoi District, Shri. Y.H.Lyngdoh, Range Officer, Soil and Water Conservation Department and Shri. Bendar Rane, Assistant Headman Pahammawlein in charge of 19th Mile. The Public Hearing was attended by 67 participants out of which 51 were males and 16

were females including few members from the Federation of Khasi Jaintia and Garo People (FKJGP) Ri-Bhoi Circle.

Shri Aiban Swer opened the Public Hearing by giving an introduction about the need for Social Impact Assessment study and hence the Public Hearing. For further clarification on the said acquisition, review of the detailed report by Smt. Naphisha Kharkongor and Shri. Spainlang Lyngdoh from the SIA team was conducted to the satisfaction of all those present.

Figure 8 Public Hearing at 19th Mile, Ri Bhoi District on 10th June, 2017



Shri J. Syngkli, the former headman expressed his happiness at the coming of this project as it will check on the influx of illegal immigrants into the state. He also asked for the opinion from the other participants present there by raising their hands to express if they disagreed at the coming of this project. None of the participants raised their hands which showed that everyone

present agreed to the setting up of the Integrated facilitation centre cum Entry Point at 19th mile Pahammawlein, Ri Bhoi District.

Smt Y.R Mawlong EAC, MCS from the office of the Deputy Commissioner, Ri-Bhoi District, said that she is very glad to see the cooperation between the village and the Government in setting up of the project.

Figure 9 Public Hearing at 19th Mile, Ri Bhoi District on 10th June, 2017



The Public Hearing was concluded by Shri Aiban Swer, OSD MIG, by asking all the participants to vote by raising their hands to show the approval to the proposed land acquisition for setting up of the project. All of the participants raised their hand showing they approved to the coming of this project.

Major Findings

This chapter lists the major findings that the research team gathered from site visits as well as interaction with the stakeholders

Environmental impacts

The proposed land comprises of a steep hillock which would require a huge amount of earthwork to bring it to road level. Stringent measures have to be taken by the District Administration, Ri Bhoi to ensure no adverse environmental fallout out of this work.

Trees & Vegetation

Even though the land has remained unused for few years, people from the village still collect broomgrass freely and get around 5000-10000 per year.

Water Sources

There is a PHE water tank which is just half a kilometre from the proposed land. According to the people from the village, the water tank was handed over to the community but has remained unused for more than a decade since the village has sufficient water sources.

Impact on Women

The project will bring more benefit to women of the area as it will give more employment opportunities through the opening of shops and other livelihood activities near the project area.

Impact on Transport and Communication

Movement of vehicles will be affected during the construction period as the hill has to be cut down to bring it to road level and since the proposed land is adjacent to the NH40.

There is steep village road which passes through the proposed project site. This road is hardly used as there is a less steep one which connects the NH-40 with the village homestead area. Thus, there will be no negative impact on the village road.

Impacts on Safety

The project will bring more security in the area due to the presence of police personnel, streetlights and livelihood activities.

Impacts on Sanitation & Cleanliness

The huge amount of earthwork required to level the land during the construction phase may create issues of sanitation and cleanliness in the area.

Findings from the Public Hearing

From the Public Hearing, it was learnt that the residents of the village, the representatives of the NGO, and the other stakeholders involved that they had no objections to the land acquisition and accepted it as it is.

Other Issues

The proposed land has a comparatively narrow connection with the National Highway which would make it difficult for entry and exit of large number of vehicles. Since the proposed land is a steep hillock, levelling it would bring

in threat of landslides and disturb the environment surrounding it especially in a seismic zone like Meghalaya.

Social Impact Mitigation Plan

The following is the Social Impact Management Plan for the proposed land acquisition at 19th Mile, Pahammawlein, Ri Bhoi District, Meghalaya for the purpose of setting up and Entry Point:

Table 3 Summary Table of Positive and Negative Impacts

	Type of Impact	
	Negative	Positive
Agriculture	<ul style="list-style-type: none"> • Loss of fallow land 	Nil
Livelihoods	<ul style="list-style-type: none"> • Negligible loss of income for some residents. 	<ul style="list-style-type: none"> • Employment opportunities within the project to local residents. • Employment opportunities to women to set up shops in and around the project.
Trees	<ul style="list-style-type: none"> • Loss of trees (horticultural and otherwise) present in the project site 	<ul style="list-style-type: none"> • Creation of avenue trees and other ornamental plants in the area.
Water	<ul style="list-style-type: none"> • Nil 	<ul style="list-style-type: none"> • Access to more water supply.
Structures	<ul style="list-style-type: none"> • Nil 	<ul style="list-style-type: none"> • Creation of new modern facilities to meet the requirement of the facilitation Centre
Surrounding areas	<ul style="list-style-type: none"> • May impact surrounding land owners/users during 	<ul style="list-style-type: none"> • Modern facilities to be installed such as water supply/electricity will

	construction and post construction phase.	improve their access to it.
Electricity supply	Nil	<ul style="list-style-type: none"> Electricity supply will improve with the setting up of this centre.
Health	<ul style="list-style-type: none"> Impacts on health due to dust, noise pollution, etc. especially during construction phase. 	<ul style="list-style-type: none"> The Centre will bring in health facilities also besides other benefits
Road	<ul style="list-style-type: none"> During construction phase commuters on NH-40 may face some inconvenience. Loss of village road 	<ul style="list-style-type: none"> Creation of Bye lanes for the Centre will enable the free movement of vehicles. The village road connecting the homestead area with the NH-40 may be paved/metalled to ease the travel of villagers using it.
Safety	<ul style="list-style-type: none"> During construction phase landslides may happen. 	<ul style="list-style-type: none"> Increased policing of the area may increase the feeling of safety for the residents. The increased number of streetlights etc. may also avert criminal activities/intent.
Miscellaneous	<ul style="list-style-type: none"> 	<ul style="list-style-type: none"> Overall safety to the state and its people from entry of illegal migrants and criminals.

Measures to Avoid, Mitigate and Compensate Impact

Resettlement Measures

- The land to be acquired would not require resettlement of any project affected persons.

Rehabilitation Measures

Social Measures

- If there are any dispute between stakeholders, the village durbars should be equipped to deal with them and to refer them to District Council or other higher authorities..
- Ensure participation by the whole community

Economic Measures

- Giving preference to local residents during the construction phase.
- During the operational and other stages of this project, preference should be given to village residents.

Environmental Measures

- There should be arrangements made to prevent spill over of work materials to public areas.
- Proper care during the construction period to prevent landslides.
- Compensatory afforestation should be made to replace loss of trees.

Miscellaneous

- Adequate measures should be placed to address unforeseen negative impacts. Institutional measures like proper grievance redressal cell may be installed.

Bibliography

Nandy, D R, and Sujit Dasgupta. 1991. "Seismotectonic domains of northern India and adjacent domains." *Physics and Chemistry of the Earth* 18 (1).

Annexure 1. Notification to conduct SIA on proposed land acquisition at 19th Mile Byrnihat.

NOTIFICATION
Under Section 4 (2) of RFCT Act, 2013.

Under Section 4 (2) of Right to Fair Compensation & Transparency in Land
Acquisition, Rehabilitation and Resettlement Act, 2013.

NO.RDA.106/2015/91

Dated Shillong, the 10th May, 2017

WHEREAS, acquisition of land area measuring 61757.52 Sq.m at 19th Mile, Byrnihat for the purpose of setting up of Facilitation Centre at the Entry Point at 19th Mile, (proposed project) to be constructed/developed by Government of Meghalaya is/are proposed.

WHEREAS, a social Impact Assessment team of the Meghalaya Institute of Governance (MIG) has been formed to consult, to survey and to take public hearing after publication of this Notification.

WHEREAS, the aforesaid team will fix and indicate the dates and venue for which all concerned will be requested to remain present with their claims/objections/suggestions, if any.

WHEREAS, the concerned land owner Shri. Mac Lyngdoh Shira himself or his representative the Headman of 19th Mile, Byrnihat and the villagers may remain present for hearing for consent/approval for the project.

WHEREAS, the process must be completed and SIA report must be submitted along with the plan (SIMP) within the time specified as per RFCT-LARR Act, 2013.

WHEREAS, any attempt at coercion or threat against the process during the specified period will render the exercise null & void.

Now, therefore, if there is any requirement for information, anyone may contact the SIA Unit.



(Shri. B. Hajong, MCS)
Joint Secretary to the Govt. of Meghalaya
Revenue & Disaster Management Department



Meghalaya Institute of Governance

Lumpynggad Cottage, Bishop Cotton Road
Shillong- 793001, Meghalaya

Phone no: 0364-2505977

No: MIG 193/2016-17/ 633

Email: migshillong@gmail.com

Dated Shillong the, 1st June, 2017

Public Notice

The Meghalaya Institute of Governance has been notified as the State Social Impact Assessment (SIA) Unit to conduct Social Impact Assessment Study for acquisition of land measuring an area of approximately 61757.67 Sq. metres for the purpose of setting up of Integrated Facilitation Centre-Entry Point at 19th Mile, Byrnihat, Ri Bhoi District.

In connection with this, a Public Hearing will be held at Pahammawleifñ, 19th Mile, Byrnihat, Ri Bhoi District at 11:00 am on the 10th of June, 2017 (Saturday).

All interested persons are invited to attend the said Public Hearing to express their claims/ objections/ suggestion, if any, on the proposal.

Dr. BDR Tiwari, IAS
Executive Director,
Meghalaya Institute of Governance,
Shillong.

Annexure 3. Attendance Sheet from the Reconnaissance Survey

Attendance Sheet
Social Impact Assessment for Land Acquisition for setting up Facilitation Centre- Entry Point
at 19th Mile, Ri Bhoi District.

Date: 29 May 2017

Sl.no	Name	Gender	Occupation	Phone No	Signature
1	MAC LYNGDOH SHERRA (LAND OWNER)	MALE	BUSINESS	9856024338	<i>[Signature]</i>
2	Felicja H. KHARONAT	FEMALE	BUSINESS	9856948092	<i>[Signature]</i>
3	KWIN TINUS TYRNA.	MALE	9862258422 BUSINESS		<i>[Signature]</i>
4	SABESISA MANLOONG	FEMALE	8730908028 HOUSE WIFE		<i>[Signature]</i>
5	BILARIS NONGRUM	FEMALE	9732865340 HOUSE WIFE		<i>[Signature]</i>
6	ANDREW JUTNGA	MALE	98634-95927 BUSINESS		<i>[Signature]</i>
7	MAN TYRNA.	MALE	9436759383 BUSINESS		<i>[Signature]</i>
8	BENDER RANEE	MALE	9774122136 ASST/HEADMAN		<i>[Signature]</i>
9					
10					
11					

Attendance Sheet
Social Impact Assessment for Land Acquisition for setting up Facilitation Centre- Entry Point
at 19th Mile, Ri Bhoi District.


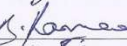
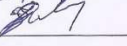
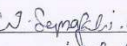
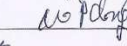
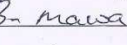

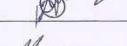
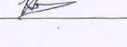
Date: 29 May 2017

Sl.no	Name	Gender	Occupation	Phone No	Signature
	Shri. P. Dikhar Dk's office Nongrum Ri Bhoi. (Rice Bnf Br)	M	Govt. Employees	9856818056	<i>[Signature]</i>
	Shri. T. Maicdol. —do—	M	Govt. Employees	7421985127	<i>[Signature]</i>

Annexure 4. Attendance Sheet from the Focus Group Discussion held on 5th June, 2017

Attendance Sheet
Social Impact Assessment for Land Acquisition for setting up Facilitation Centre- Entry Point
at 19th Mile, Ri Bhoi District.

Date: 5th June 2017.

Sl.no	Name	Gender	Occupation	Phone No	Signature
1.	Prince Sythang	M		9774774772.	
2.	Bender Rane	M		9774122136	
3.	Fleming Star Suling	M		9774308006	
4.	Wet Syng Ali	M		9774668008	
5.	Mi Blang	M			
6.	Bim Mawa	M			
7.	Koring Luningdoh	M		9779557802	
8.	Shirika P. Sythang	F.			
9.	Arbor Khar Syntoon			9862201387.	
10.	Koming I				

Annexure 5. Attendance Sheet from Public Hearing held on 10th June, 2017

Attendance Sheet (Public Hearing)
Social Impact Assessment for Land Acquisition for setting up Facilitation Centre- Entry Point
at 19th Mile, Byrnihat, Ri Bhoi District.

Date: 10.06.2017

Sl.no	Name	Gender	Occupation	Phone No	Signature
1	Bendat Ramme	M	Asst. HEADMAN	9774122136	B. Ramme
2	Luisla Kyngeleh	M	Gen. Sec. Malang FKJP North Khasi Hill	9863185850	Kyngeleh
3	Mudein Mylon	M		9862866522	M. Mylon
4	Phar. Dkhah	M	LABOUR	82578838	P. Dkhah
5	Kominy Kyngeleh	M	LABOUR	972457302	K. Kyngeleh
6	Land. Rami	M	LABOUR	8794573898	L. Rami
7	JES PAR SYNGKH	M	-do-	9774069723	J. Syngkh
8	WAR LYNQOCH	M	-do-	-	WAR
9	SOCIAL TANGSANG	M	-do-	-	S. Tangsang
10	TRESILIA SYLIANG	F	-do-	-	T. Syliang
11	Balongwahlong	F	HOUSE WIFE	-	B. W

Attendance Sheet (Public Hearing)
Social Impact Assessment for Land Acquisition for setting up Facilitation Centre- Entry Point
at 19th Mile, Byrnihat, Ri Bhoi District.

Date: 10.06.2017

Sl.no	Name	Gender	Occupation	Phone No	Signature
12	Wan SIKHMON Khong Jich	F	OWN WORK	9862886593	W. Khong Jich
13	Ryan Tampang	M	BUSINESS	9856658936	R. Tampang
14	SOLIMON Kyngeleh	M	-do-	8413003955	S. Kyngeleh
15	Phida Shadap	F	-	-	Phida
16	Balingstone Syiem	M	BUSINESS	7085884963	B. Syiem
17	Jonathan syngkh	M	-do-	9774847639	J. Syngkh
18	Mardaka Sucheng	F	HOUSE WIFE	9131074581	M. Sucheng
19	Risalin Shadap	F	-do-	7085252225	R. Shadap
20	Julia Kyngeleh	F	-do-	8732850935	Julia Kyngeleh
21	LUMAMPB - MAWME	M	vice-president FKJP	8974158052	L. Mawme
22	Shondom Kyngeleh	M.	M.P.	9866613317	S. Kyngeleh

Attendance Sheet (Public Hearing)
Social Impact Assessment for Land Acquisition for setting up Facilitation Centre- Entry Point
at 19th Mile, Byrnihat, Ri Bhoi District.

Date: 10.06.2012

Sl.no	Name	Gender	Occupation	Phone No	Signature
23	George Tanyang	M	Acupuncturist	8731902748	George Tanyang
24	A. Lamin	M	-	9612146581	A. Lamin
25	P. Chyrie	M	-	8974601756	P. Chyrie
26	Beronica Lyngdoh	F	Labour	-	Beronica Lyngdoh
27	Bilavie Nongvoun	F	House wife	8732865340	B. Nongvoun
28	Dadashisha Mawein	F	-	8729844723	D. Mawein
29	Sunita Sylliang	F	-	8730077408	Sunita Sylliang
30	Nendavil Momi	M	Businessman	8259967976 85299676	Nendavil Momi
31	Ramzi Sylliang	M	-	-	Ramzi Sylliang
32	Arrest Semakke	M	-	-	Arrest Semakke
33	ELVIS SYRIEM	M	Tollgate	8257969627	ELVIS SYRIEM

Attendance Sheet (Public Hearing)
Social Impact Assessment for Land Acquisition for setting up Facilitation Centre- Entry Point
at 19th Mile, Byrnihat, Ri Bhoi District.

Date: 10.06.2012

Sl.no	Name	Gender	Occupation	Phone No	Signature
34	Abdul Ali	M	FARMING	9612979722	Abdul Ali
35	ANJUN DALLIANG	M	II	8413039445	ANJUN DALLIANG
36	J. K. Sogoth	M	II	8794006037	J. K. Sogoth
37	DOT SHADDP	M	II	-	DOT SHADDP
38	DONMON Sylliang	M	TOLGATE	8794256640	DONMON Sylliang
39	Floring Shor Subing	M	Tolgate	9774308006	Floring Shor Subing
40	Tes Shanglong	M	Driver	9774067587	Tes Shanglong
41	Mit Synokli	M	Farm labour	-	Mit Synokli
42	Purnima Sylliang	F	House wife	8794755576	Purnima Sylliang
43	Sit. Phocimai Sylliang	F	House wife	8974628436	Sit. Phocimai Sylliang
44	Bengai Sylliang	M	DRIVER	8257885837	Bengai Sylliang

Attendance Sheet (Public Hearing)
Social Impact Assessment for Land Acquisition for setting up Facilitation Centre- Entry Point
at 19th Mile, Byrnihat, Ri Bhoi District.

Date: 10.06.2017

Sl.no	Name	Gender	Occupation	Phone No	Signature
45	Bankrupang Shaelop	M	Farmer	7600062273	B.C
46	Nirmal Das	M	Driver	7085252231	NIR Malpas
47	Lung wahlang	M	"	9862866468	Lung
48	Dream San Lyngdoh	M	Artist	8256968302	B. Lyngdoh
49	Nicholas Lyngdoh	M	Farmer	8113016778	N. Lyngdoh
50	Picrist Lyngdoh	F	Farmer	7085280637	P. Lyngdoh
51	ATO HOLI	F	House Wife	7085978237	
52	Pymai dhor Lyngdoh	M	Farmer	8256968302	Lyngdoh
53	Bokol Syngkli	M	-do-	-	B. Syngkli
54	Jelson Lyngdoh	M	Farmer	8794315874	J. Lyngdoh
55					

Attendance Sheet (Public Hearing)
Social Impact Assessment for Land Acquisition for setting up Facilitation Centre- Entry Point
at 19th Mile, Byrnihat, Ri Bhoi District.

Date: 10.06.2017

Sl.no	Name	Gender	Occupation	Phone No	Signature
56	Shi T. H. Lyngdoh	M	R.O.	9868277425	Shi
57	Shirinlyno Raphep	F	Ranger (owner)	9863028128	Shi
58	Sweet Mary Shylla	F	S.C.D (G.D)	9856831840	Shi
59	HAC LYNGDOH SAIRA	M	Business	9856824338	Shi
60	SANJOY KUSUBAH	M	"	98625-88998	Shi
61	M. JYKHA	M	"	9436759383	Shi
62	Khem Mongrum	"	Farmer		Khem
63	Myndupang nonghum		Farmer	76389391045	Khem
64	Starlington Lyngdoh				S.H
65	Ribon Lang				RS
66	Mifapang	M	Farmer	-	M.P

Date: 10.06.2017

[illegible]